



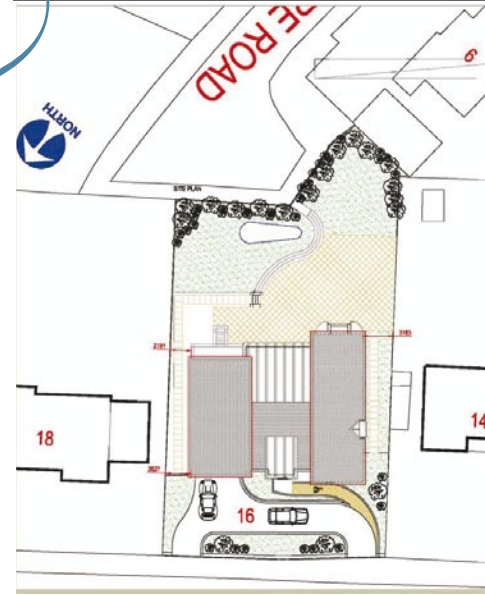
Burnside Road, Whitecraigs  
URBAN DEVELOPMENT

SCHEME TWO

The scheme two replacement dwelling provides contemporary in design accommodation over three levels.

Total floor are for this development is 541 m<sup>2</sup> where the basement utilises the change in ground levels.

External finishes are natural slate for the pitched roofs and copper to the flat roof areas. Walls are smooth render with blonde sandstone details.



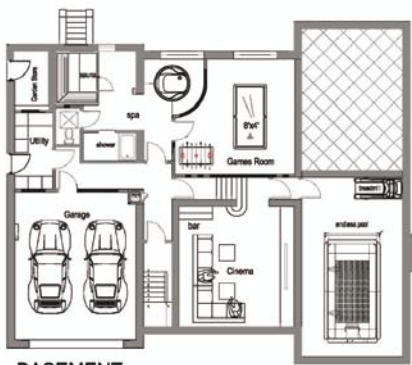
[www.corumproperty.co.uk/developments](http://www.corumproperty.co.uk/developments)

**Basement:** Garden store, games room, utility, double garage and spa with jacuzzi, sauna, shower, wc, endless pool and cinema room

**Ground:** Lounge, formal dining rm, study, wc, chill-out room, open kitchen/breakfast/family room

**First:** Five dble bedrooms, master with en-suite & dressing room, three further en-suites and snug

PROPOSED LAYOUT



**BASEMENT PROPOSED**



**GROUND FLOOR PROPOSED**  
window recessed 300mm back from face  
Access to basement from hall Below staircase.



**FIRST FLOOR PROPOSED**  
window recessed 300mm back from face



**FRONT ELEVATION - NORTH EAST - STREET SCENE PROPOSALS**



**REAR ELEVATION - SOUTH WEST PROPOSALS**